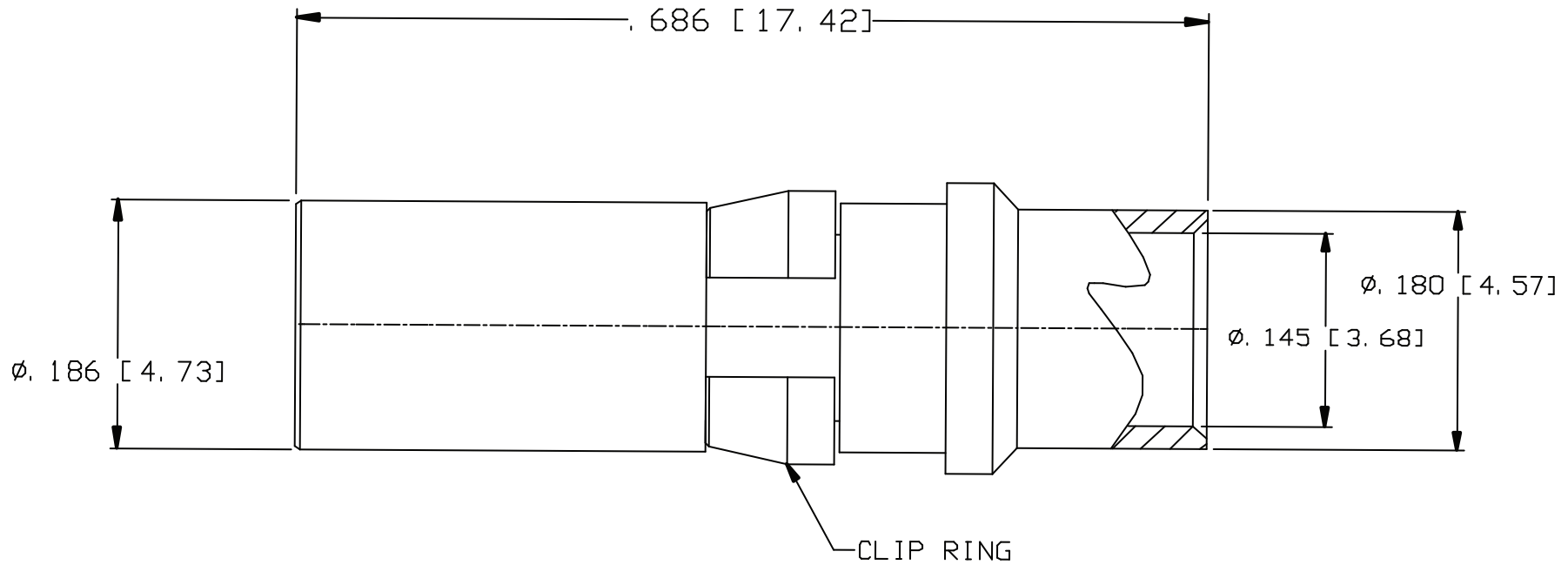


CAD DRAWING - NO MANUAL REVISIONS



Notes:

26D-0020-1410B

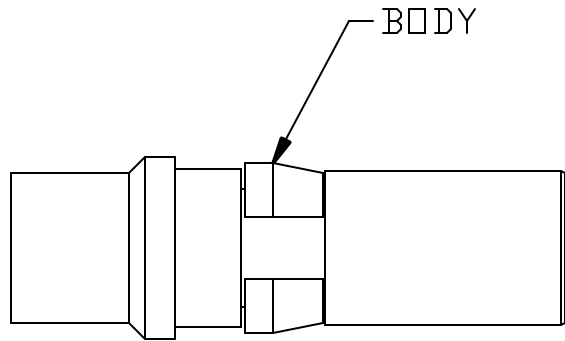
- 1) Design and Interface per IDS 26.
- 2) Blindmate RF/Microwave Contact for DIN 41612 Connectors.
- 3) Size 8 PkZ®, 50 Ohm, 32 GHz Straight Receptacle.
- 4) Direct Solder to RG-402 Cable (M17/130) .141S.R.
- 5) .000030" Min. Gold Over Nickel.

H	PER ECN 10207	02/25/10	JEN	PALCO CONNECTOR 22 GREAT HILL RD., NAUGATUCK, CT 06770 UNLESS OTHERWISE SPECIFIED, PALCO WORKMANSHIP STANDARDS APPLY TOLERANCES ON: DECIMALS: XX ± .01 , XXX ± .005 ANGLES ±1/2° 32 DIMENSIONS IN INCHES OR (METRIC) DO NOT SCALE PRINTS	DRAWN MY	CHECKED HN	ENGINEER YT	APPROVED HN	FSCM 58167
G	PER ECN 8291	11/22/05	JEN			DESCRIPTION PKZ RECEPTACLE (DIRECT SOLDER)			
F	PER ECN 7108	07/14/03	HN			DATE 06/14/88	DRAWING NO. 26D-1020-1410	PLATING OPT. B	
E	PER ECN 2439	04/11/94	HN						
D	PER ECN 1659	03/06/91	HN						
REV.	DESCRIPTION	DATE	APPR.						

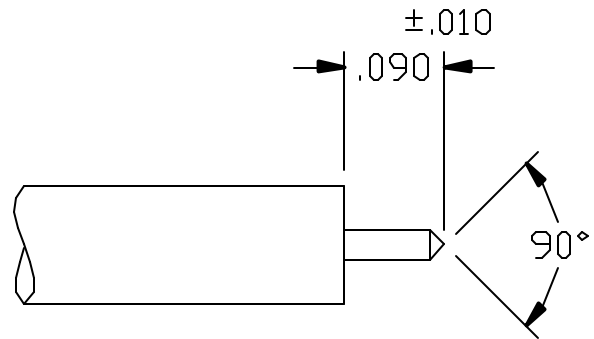
THE INFORMATION IN THIS DOCUMENT IS CONFIDENTIAL AND PROPRIETARY AND MAY NOT BE USED FOR ANY PURPOSE WITHOUT THE WRITTEN CONSENT OF PALCO.

CABLE ASSEMBLY PROCEDURE		PALEO CONNECTOR 22 GREAT HILL ROAD, NAUGATUCK, CT. 06770 PHONE: (203) 729-9090 FAX: (203) 723-1794	REV	DESCRIPTION	DATE	APPR
P/N 26D-1020-1410			E	PER ECN 6630	05/24/02	HN
PAGE 1 OF 2	DATE: 05/24/02		F	PER ECN 7108	07/14/03	HN
DRAWN: RVR	APPROVED: HN		G	PER ECN 8291	12/05/05	JEM
FOR USE WITH RG-402 CABLE		H	PER ECN 10207	02/25/10	JEM	

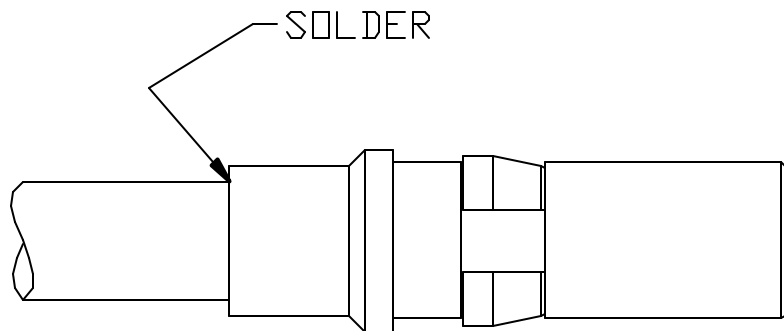
FOR USE WITH RG-402 S/R CABLE



STEP 1
 TRIM CABLE TO DIMENSIONS
 SHOWN, POINT CENTER
 CONDUCTOR.

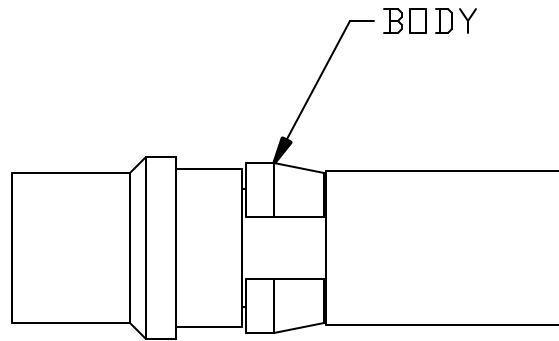


STEP 2
 SLIDE CABLE INTO
 BACK OF BODY UNTIL
 CABLE BOTTOMS,
 SOLDER CABLE TO
 BODY AND CLEAN
 SOLDER JOINT.

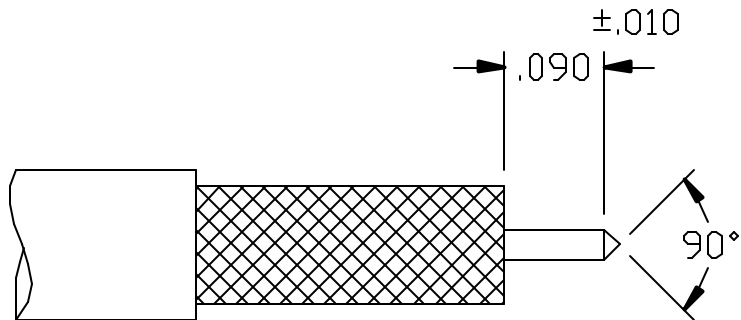


CABLE ASSEMBLY PROCEDURE		 22 GREAT HILL ROAD, NAUGATUCK, CT. 06770 PHONE: (203) 729-9090 FAX: (203) 723-1794	REV	DESCRIPTION	DATE	APPR
P/N	26D-1020-1410		G	PER ECN 8291	12/05/05	JEM
PAGE	2 OF 2		H	PER ECN 10207	02/25/10	JEM
DRAWN:	EK					
FOR USE WITH TFLEX-402 CABLE						

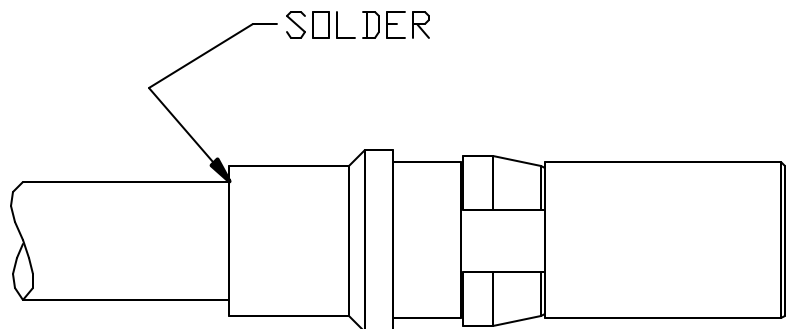
FOR USE WITH TFLEX-402 CABLE




STEP 1
TRIM CABLE TO
DIMENSIONS SHOWN.



STEP 2
SLIDE CABLE INTO
BACK OF BODY UNTIL
CABLE BOTTOMS.
SOLDER CABLE BRAID
TO BODY AND CLEAN
SOLDER JOINT.



INTERFACE DESIGN STANDARD			REV	DESCRIPTION	DATE	APPR	
IDS-26			D	PER ECN 6752	10/24/02	HN	
PAGE 1 OF 1	DATE: 02/28/94		E	PER ECN 7265	01/27/04	HN	
DRAWN: JEM	APPROVED: HN		F	PER ECN 9935	05/22/09	JEM	
				G	PER ECN 10145	01/20/10	JEM

22 GREAT HILL ROAD, NAUGATUCK, CT. 06770
PHONE: (203) 729-9090 FAX: (203) 723-1794

DESCRIPTION: 26 SERIES PkZ®, SIZE 8 MICROWAVE CONTACTS FOR STANDARD DENSITY MULTIPORT RF D-SUB CONNECTORS

MECHANICAL

MATERIALS

BODIES:

PLUG BODIES - BRASS PER ASTM B 16.
RECEPTACLE BODIES - BRASS PER ASTM B 16.

PLATING:

GOLD PER MIL-G-45204.
COPPER PER MIL-C-14550.
NICKEL PER QQ-N-290.

INSULATORS - VIRGIN TEFLON (PTFE) PER ASTM D 1710 AND ASTM D 1457.
RETAINING RING - BERYLLIUM COPPER PER ASTM B 196.
MALE CONTACT - BERYLLIUM COPPER PER ASTM B 197.
FEMALE CONTACTS - BERYLLIUM COPPER PER ASTM B 197.
WEATHER SEAL GASKET (OPTIONAL) - SILICONE RUBBER PER ZZ-R-765.
EMI GASKET - BERYLLIUM COPPER ASTM B 196.

FINISHES (ADD LETTER TO END OF PART NUMBER)

"A" - .000050 MIN. GOLD OVER NICKEL
"B" - .000030 MIN. GOLD OVER NICKEL
"C" - .000050 MIN. GOLD OVER COPPER
"D" - .000030 MIN. GOLD OVER COPPER

MATING CHARACTERISTICS

OUTER BODIES _____ 3 LBS MAX. INSERTION.
2 OZ. MIN. WITHDRAWAL.
CENTER CONTACTS _____ 32 OZ. MAX. INSERTION.
.5 OZ. MIN. WITHDRAWAL.
HOUSING RETENTION _____ 12 LBS. MIN.
AXIAL MATING TOLERANCE _____ .090

ELECTRICALS

FREQUENCY RANGE: DC TO 32 GHz.
VOLTAGE RATING STRAIGHT: 1000 VRMS.
VOLTAGE RATING ANGLED: 800 VRMS.
CURRENT RATING: 5 AMPS.
INSULATION RESISTANCE: 2000 MEGOHMS MIN.
INSERTION LOSS: $.06 \sqrt{f(\text{GHz})}$ dB

CONTACT RESISTANCE: CENTER CONTACT 5 MILLIOHMS
CONTACT RESISTANCE: OUTER CONTACT 3 MILLIOHMS
VSWR: 1.08 + .009(f) GHz., RG-402 CABLE.
1.15 + .02 (f) GHz., RG-174 & RG-316 CABLES.
1.15 + .01 (f) GHz., RG-142, 223, 303 & 400 CABLES.

ENVIRONMENTAL

OPERATING TEMPERATURE: -65°C to +165°C
VIBRATION: MIL-STD-202, METHOD 204, TEST CONDITION D.
SHOCK: MIL-STD-202, METHOD 213, TEST CONDITION I.
SALT SPRAY: MIL-STD-1344, METHOD 1001, CONDITION B.
DURABILITY: 500 CYCLES.

THERMAL SHOCK: MIL-STD-202, METHOD 107, TEST CONDITION B, EXCEPT HIGH TEMPERATURE SHALL BE +85°C.
MOISTURE RESISTANCE: MIL-STD-202, METHOD 106. NO MEASUREMENT AT HIGH HUMIDITY. INSULATION RESISTANCE 2000 MEGOHMS AFTER HUMIDITY.

